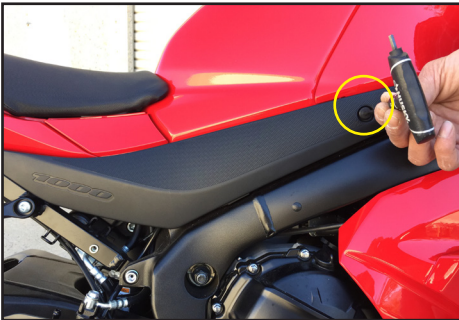


SUZUKI GSX-R 1000 UNDERTAIL 2017

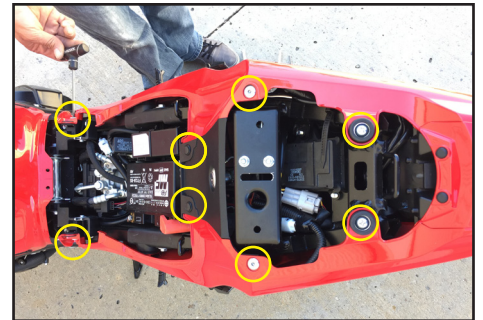
HOTBODIES RACING RECOMMENDS THAT YOU HAVE A PROFESSIONAL MECHANIC PERFORM THIS INSTALLATION. IF YOU CHOOSE TO "DO-IT-YOURSELF" ALWAYS TAKE APPROPRIATE SAFETY MEASURES WHEN INSTALLING THIS PRODUCT AND USE SAFETY GOGGLES AND LEATHER GLOVES. CAREFULLY READ ALL INSTRUCTIONS BEFORE BEGINNING THE INSTALLATION PROCESS! HOTBODIES RACING WILL NOT REPLACE YOUR STOCK GLOVE-BOX FOR ANY REASON, MEASURE TWICE AND CUT ONCE!



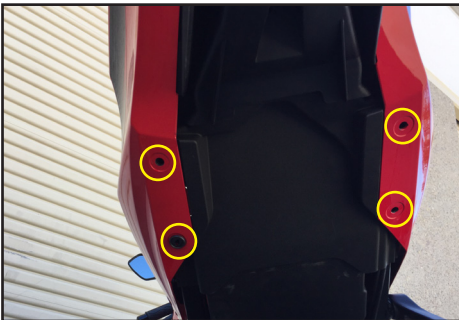
1) Remove side panels



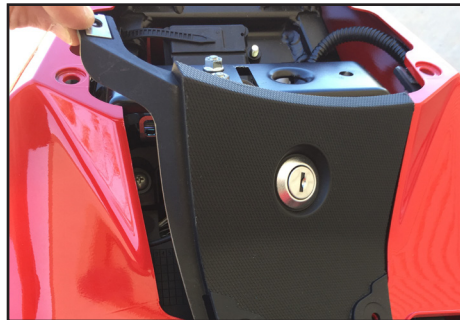
2) Remove seat(s)



3) Remove tail section bolts and push rivets.



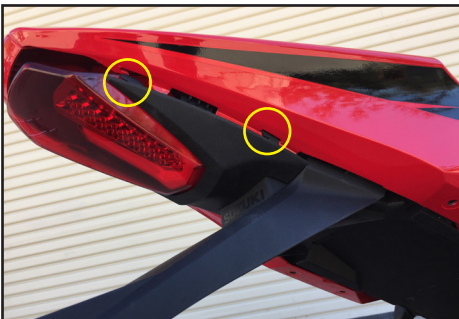
4) Remove push rivets from underneath the tail.



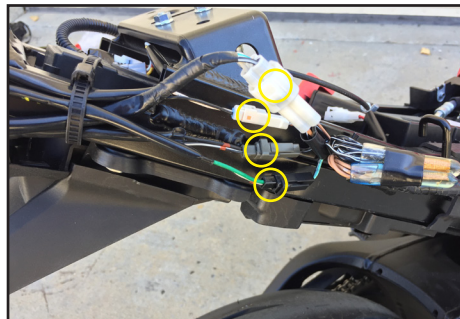
5) Remove key lock panel from tail section.



6) Disconnect key lock cable.



7) Pull back on tail section to unhook from under tray.



8) Disconnect electrical plugs.



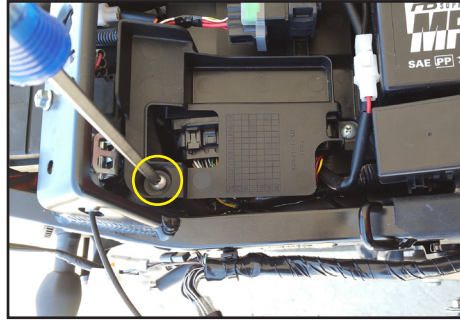
9) Remove 4 bolts holding under tray.

SUZUKI GSX-R 1000 UNDERTAIL

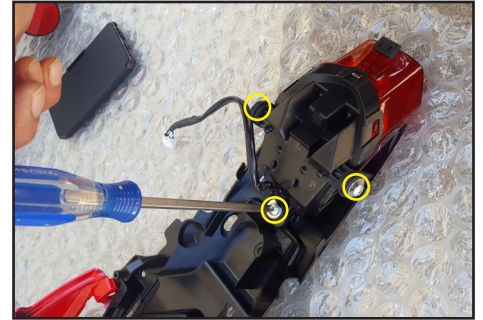
2017



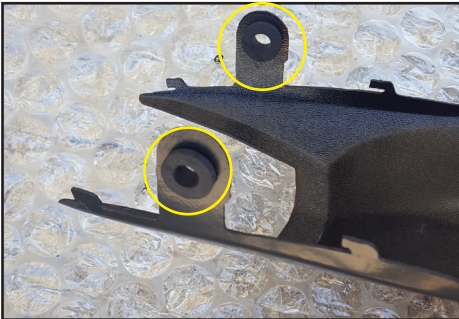
10) Remove side screws holding under tray.



11) Remove screw located near ECU.



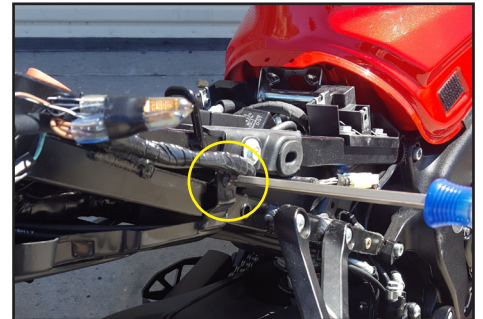
12) Remove tail light.



13) Install stock taillight grommets onto undertail.



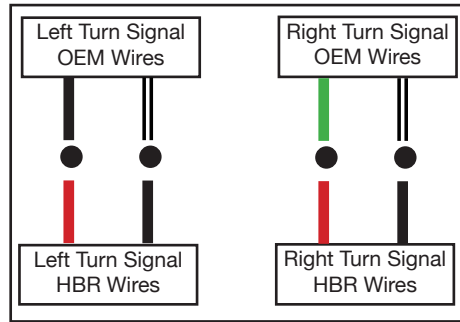
14) Use stock hardware to mount tail light to undertail.



15) Use stock screws to fasten undertail to side.



16) Reinstall tail section, connect key lock cable, and mount seats.



17) Turn signal wiring diagram.



Finished.