



# KAWASAKI ZX10R RACE TAIL

2016

HOTBODIES RACING RECOMMENDS THAT YOU HAVE A PROFESSIONAL MECHANIC PERFORM THIS INSTALLATION. IF YOU CHOOSE TO "DO-IT-YOURSELF" ALWAYS TAKE APPROPRIATE SAFETY MEASURES WHEN INSTALLING THIS PRODUCT AND USE SAFETY GOGGLES AND LEATHER GLOVES. CAREFULLY READ ALL INSTRUCTIONS BEFORE BEGINNING THE INSTALLATION PROCESS! HOTBODIES RACING WILL NOT REPLACE YOUR STOCK GLOVE-BOX FOR ANY REASON, MEASURE TWICE AND CUT ONCE!

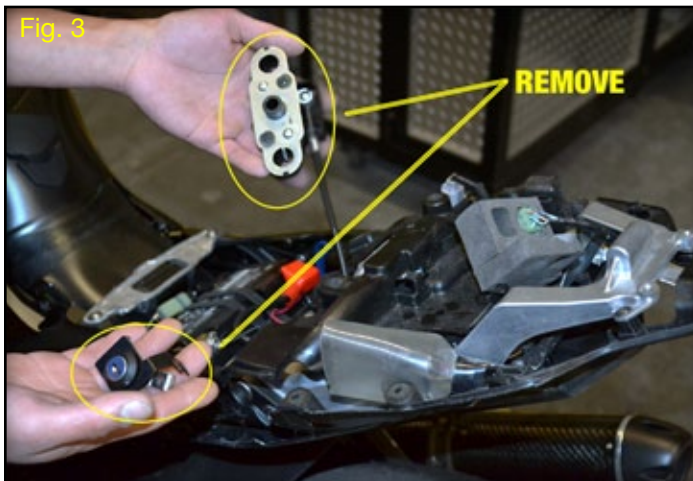
1) Carefully remove the stock tail section body work from the bike. Disconnect the brake light wires, license plate and turn signals, then remove the stock mud flap.



2) Cut and remove the stock plastic in the areas highlighted in Fig. 1



3) After plastic has been removed pictured in Fig. 2



4) Remove the latch and key lock for the rear seat as shown in Fig. 3



5) Final finished install after fastening the top of the tail section and the riders seat.

READ CAREFULLY BEFORE INSTALLATION! This item has been designed for off road racing use only, and has not been presented for D.O.T. certification Hotbodies Racing Inc., our distributors, and our dealers will NOT be responsible for the use or misuse of this product. Always check with your local Department of Motor Vehicles before modifying any aspect of your motorcycle.