

HOTBODIES RACING.COM

2009-11' ZX6R Undertail Kit

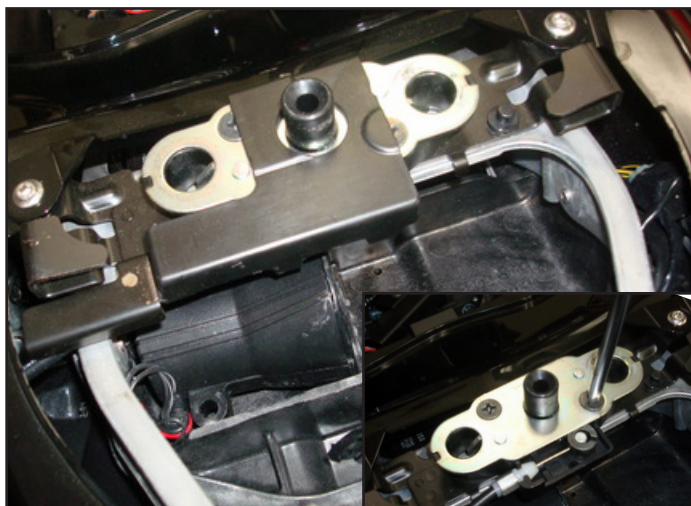
HOTBODIES RACING RECOMMENDS THAT YOU HAVE A PROFESSIONAL MECHANIC PERFORM THIS INSTALLATION.

IF YOU CHOOSE TO "DO-IT-YOURSELF" ALWAYS TAKE APPROPRIATE SAFETY MEASURES WHEN INSTALLING THIS PRODUCT AND USE SAFETY GOGGLES AND LEATHER GLOVES. CAREFULLY READ ALL INSTRUCTIONS BEFORE BEGINNING THE INSTALLATION PROCESS!

HOTBODIES RACING WILL NOT REPLACE YOUR STOCK PART FOR ANY REASON. MEASURE TWICE AND CUT ONCE!



1) Remove 5mm hex bolts to undo mudflap (as pointed out) bolts are located inside glovebox. Disconnect signal light and license plate light wires to remove mudflap completely. Then remove tail section from subframe.



2) Remove stock undertail by removing seat latch (2 Phillips head screws), disconnect tail light. Remove undertail, lock assembly, and tail light. Save all bolts and hardware for re-installation.

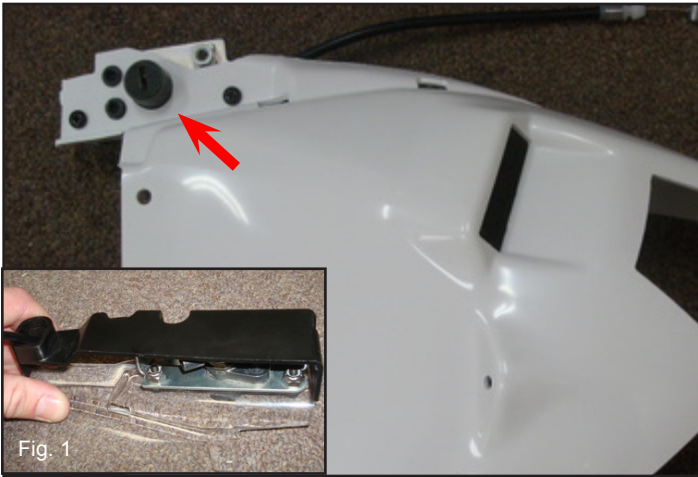


3) Drill out the two rivets that hold on the top end of the tail section and remove top piece (as shown in photo). Separated top piece will bolt on to new undertail with nuts and bolts supplied.

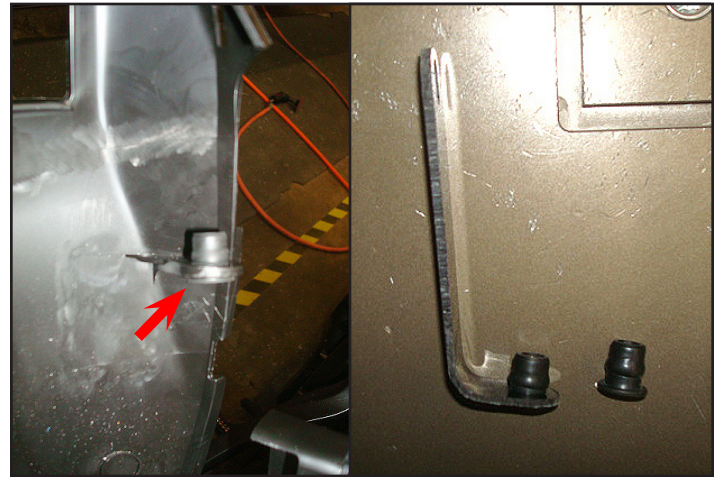


4) Attach black plastic piece that was removed (Step 3) and attach to the new undertail with provided small nuts and bolts.

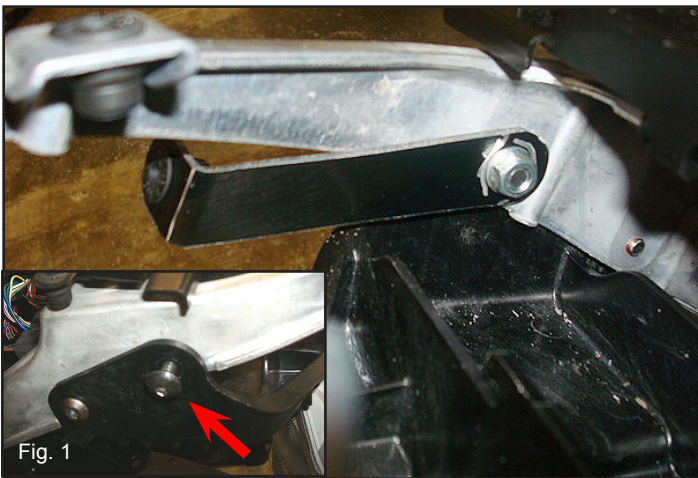
READ CAREFULLY BEFORE INSTALLATION! This undertail like all undertails has been designed for off road racing use only, and has not been presented for D.O.T. certification! Hotbodies Racing Inc., our distributors, and our dealers will NOT be responsible for the use or misuse of this product. Always check with your local Department of Motor Vehicles before modifying any aspect of your motorcycle.



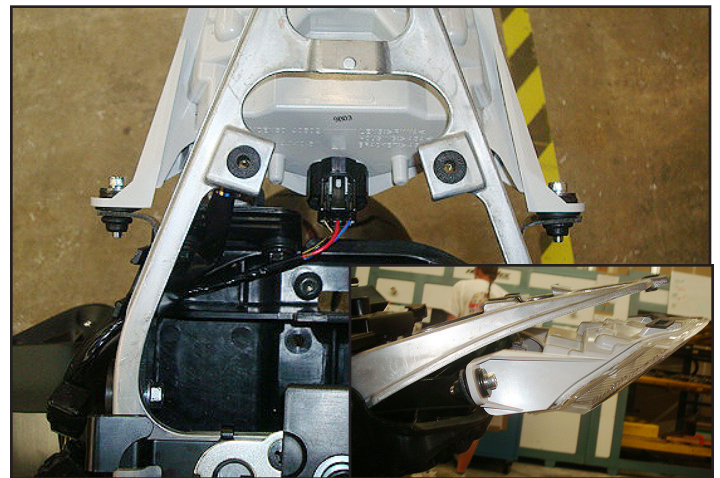
5) Remove key lock mechanism from stock undertail and remove the stock plastic black cover as shown in Fig 1. Attach key lock mechanism to Hotbodies undertail with nuts and screws provided.



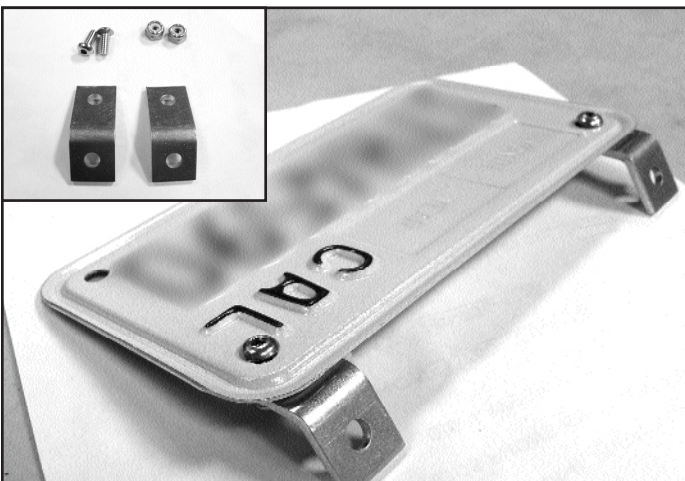
6) Remove both the well nuts from either side of the stock undertail that hold the tail light and place in both of the provided light brackets as shown.



7) Replace the top bolt shown (inset) with the longer bolt provided in the kit. Attach the light brackets as shown, leave the bolt hand snug so you can adjust the light to the undertail in step 9.



8) Attach the light to the light brackets as shown using the stock hardware, similar to the stock undertail.



7) *Install license plate brackets to back side of license plate as shown. Now hold license plate in desired location on undertail, carefully mark and drill holes, install using the two (2) sets of align bolts and lock nuts.



8) Align side tail section pieces with new undertail and attach all stock mounting bolts. Re-attach seat and your done! Adjust the brake light as necessary and tighten the nuts from step #7.

WIRING INSTRUCTIONS:

*Use the provided blue clips to connect turn signal wires in undertail. On the bike; the green wire is the left turn signal, gray wire is the right turn signal and the black w/ yellow tracer wires are the grounds. On the undertail the red wires are the power/turn signal wires and the black wires are the ground.