

# HOTBODIES RACING.COM

## Kawasaki ZX14R Undertail Kit

(2006-07, Available in: Kawasaki 07 Blue, 06 Blue, White, Red, and Black)

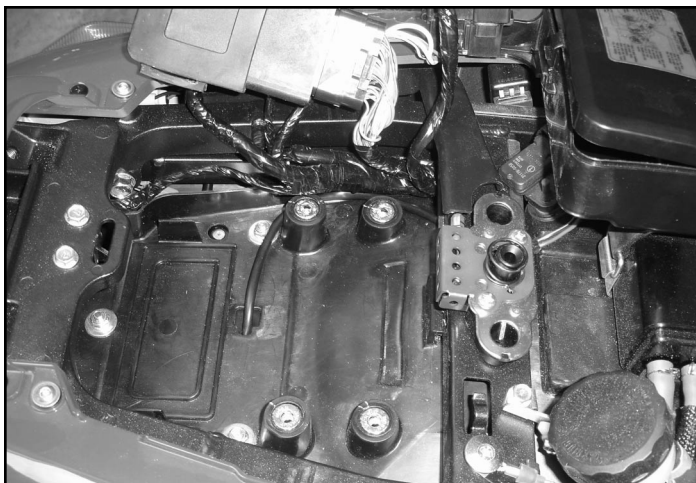
**HOTBODIES RACING RECOMMENDS THAT YOU HAVE A PROFESSIONAL MECHANIC PERFORM THIS INSTALLATION. IF YOU CHOOSE TO "DO-IT-YOURSELF" ALWAYS TAKE APPROPRIATE SAFETY MEASURES WHEN INSTALLING THIS PRODUCT AND USE SAFETY GOGGLES AND LEATHER GLOVES. CAREFULLY READ ALL INSTRUCTIONS BEFORE BEGINNING THE INSTALLATION PROCESS! HOTBODIES RACING WILL NOT REPLACE YOUR STOCK GLOVE-BOX FOR ANY REASON, MEASURE TWICE AND CUT ONCE!**



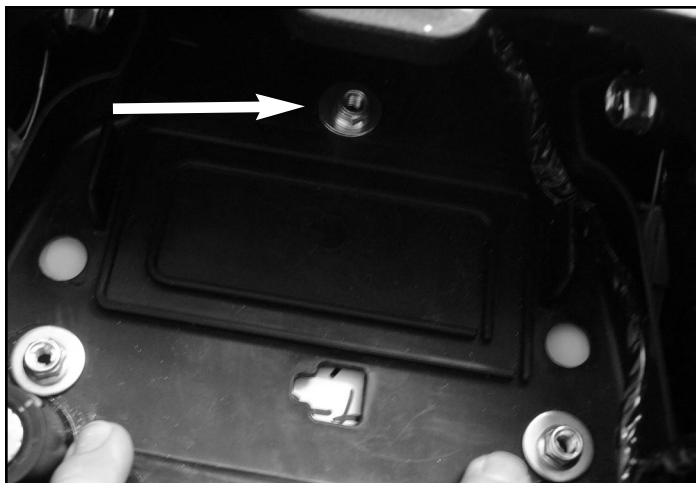
**1)** Carefully remove the seat and seat cover, to access trunk compartment of bike. Save all bolts, washers and plastic rivets for re-installation of seat and seat cover.



**2)** Remove tools and four (4) bolts located at the bottom of tool compartment. Save all bolts for re-installation.

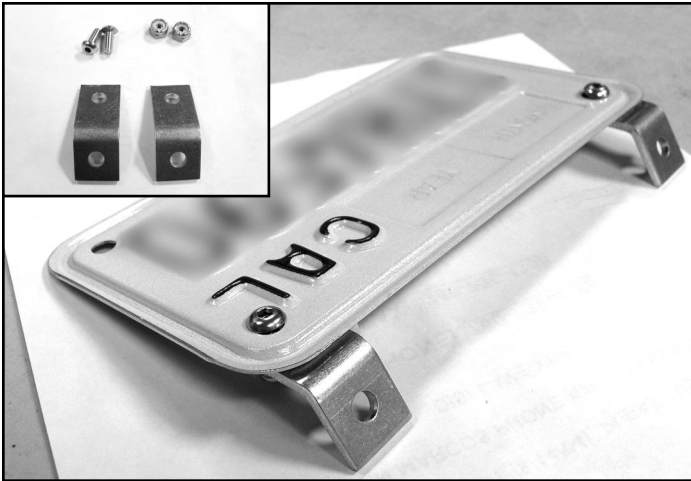


**3)** Carefully move tool compartment, ECU and ECU wires out of the way to access mud flap bolts.



**5)** Remove three (3) bolts from mud flap assembly. Stock mud flap should drop down and will be removed.

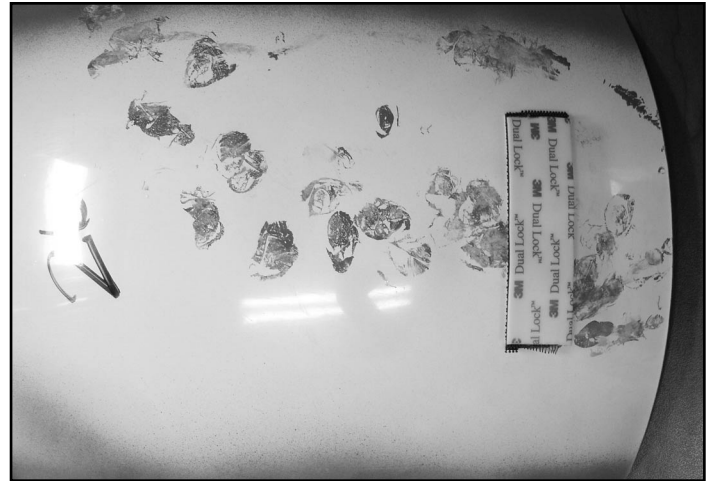
**READ CAREFULLY BEFORE INSTALLATION!** This undertail like all undertails has been designed for off road racing use only, and has not been presented for D.O.T. certification! Hotbodies Racing Inc., our distributors, and our dealers will NOT be responsible for the use or misuse of this product. Always check with your local Department of Motor Vehicles before modifying any aspect of your motorcycle.



5) \*Install license plate brackets to back side of license plate as shown. Now hold license plate in desired location on undertail, carefully mark and drill holes, install using the two (2) sets of allen bolts and lock nuts.



7) Use supplied pop rivets to mount the undertail over top of the stock black trunk compartment and complete wiring of the LED license plate light. To connect the license plate light; use the stock black and yellow tracer wires with black undertail wire and stock red with red undertail wire.



6) Before installing the undertail, remove the adhesive back. Carefully clean the stock part where this adhesive will apply to. After you install the undertail with the rivets, press firmly and hold for 30 seconds.



8) After mounting undertail, re-install ECU and tool compartments. After re-installation of tool compartment re-install seat and seat cover, making sure all bolts and hardware are fastened securely. Your done!

*\* After this modification your undertail is not returnable. Paint is not warranted against paint chips, flaking or scratches from installation or rocks being thrown from tire into the tray.*

**Need Help?** If you need additional help with the installation of the undertail, go to [www.hotbodiesracing.com](http://www.hotbodiesracing.com) and look for the "FAQs" link at the bottom of the home page. Most of your general questions can be answered on those pages. This installation does require a basic mechanical aptitude, if in doubt, contact your local motorcycle shop and have a professional mechanic perform the installation, 1.5 hours is the average installation time.